



Power a clean future.

Product Sheet

# NexBlue Zen

(Current Sensor)

**Sweden Office:**

+46 738981965

Birger Jarlsgatan 57 C,  
113 56 Stockholm, Sweden

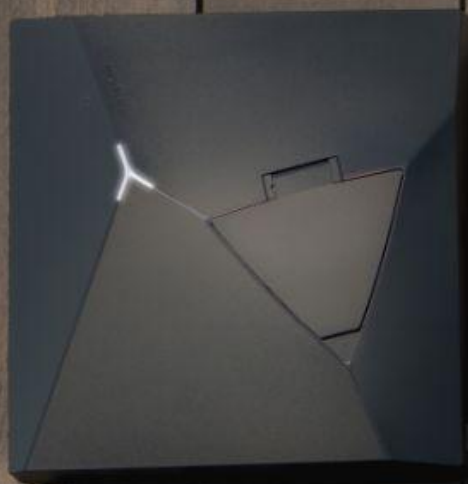
**Norway Office:**

+47 406 01 015

Grenseveien 21,  
4313 Sandnes, Norway

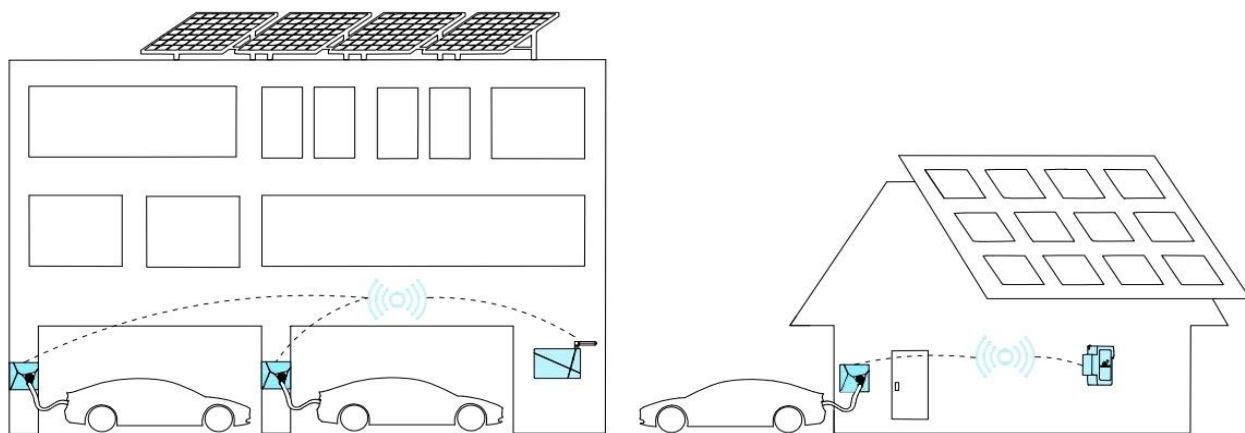
**General Inquiry Email:**

[info@nexblue.com](mailto:info@nexblue.com)



# NexBlue Zen (Current sensor)

## Load Balancer for All Scenarios



### Hassle-free smart charging

- ✓ Uninterrupted charging with DLB even without network
- ✓ High penetrability through walls with Nexus RF (Radio Frequency)
- ✓ Inter-circuit load balancing available through the Cloud in one Location



### Optimizing energy use

- ✓ Efficiently monitor and optimize energy use via WiFi or Ethernet
- ✓ Monitor solar or wind energy production
- ✓ Grasp real-time data from CT clamps, transmit to Cloud and chargers
- ✓ Future-proof for communication with energy storage and PV panels



### Effortless installation

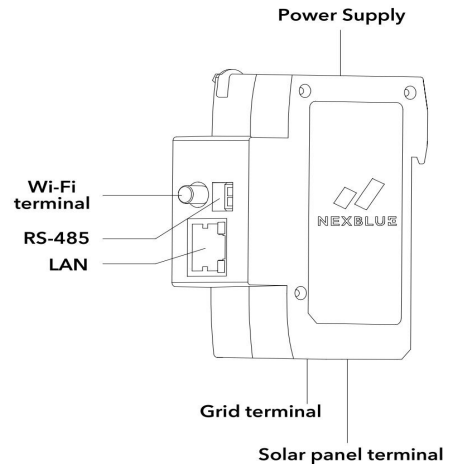
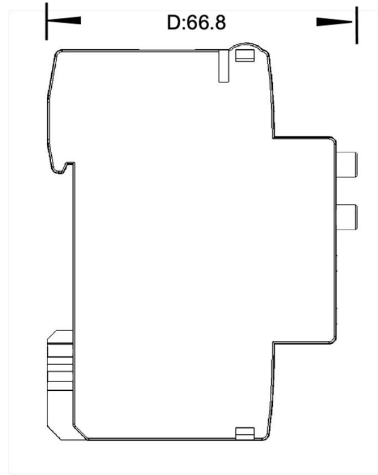
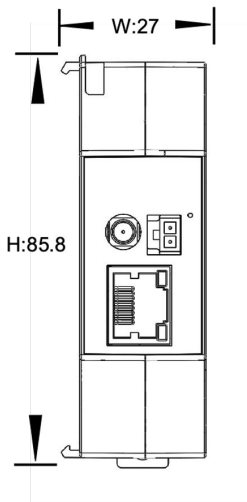
- ✓ No disassembly required
- ✓ No additional APP required
- ✓ No external power adaptor required
- ✓ 2-minute installation with DIN rail design



### Compact and highly compatible

- ✓ Nexus RF / Wi-Fi / Bluetooth / Ethernet
- ✓ Enhanced connectivity with external & extendable antenna
- ✓ With optional Rogowski Coil, current measurement up to 1500A

## Dimensions



## Technical Information

### General

Model: CS3ANA

Dimension (mm):

H:85.8 x W: 27 x D: 66.8

Weight: 95 g

Over-voltage category: OVC II

Insulation class: II

Voltage measurement range:

85-264 V AC

Rated power: 3 W

Current measurement range:

CT clamps (included):  $\pm 0 - 120$  A (MAX cross-section:  $25 \text{ mm}^2$ )

Rogowski coil (optional):  $\pm 0 - 1500$  A

Power supply:

85 - 264 V AC, 50Hz

Installation system: TT, IT or TN

single to three phase

Terminals: Grid terminal / solar panel terminal / RS-485 / LAN / Wi-Fi terminal / power supply terminal

Mounting: DIN rail

Warranty: 3 years

### Operating conditions

Operating temperature:

$-25^{\circ}\text{C}$  to  $+55^{\circ}\text{C}$

Ingress protection: IP30

Relative humidity: 0 - 90%

Altitude: 0-2000 m

Indoor use: Yes

### Connectivity

Wi-Fi: 2.4 GHz 802.11b/g/n

Bluetooth: BLE 4.2

Nexus RF

RS-485: TIA/EIA-485A

Ethernet: ISO/IEEE 802.3u

### Regulations:

EU Type Examination Certificate (Module B)

confirming compliant with:

Radio Equipment Directive 2014/53/EU

Article 3.1.a: Health and Safety

Article 3.1.b: EMC

Article 3.2: Effectively uses and efficient use of radio spectrum